



MORE THAN **50** YEARS OF EXCELLENCE IN FLOORING

INDUSTRIAL FLOORING

Sika[®] Ucrete[®]

**THE WORLD'S TOUGHEST FLOOR
SINCE 1969**

BUILDING TRUST



Sika® Ucrete® – THE WORLD'S TOUGHEST FLOOR SINCE 1969

PERFORMING AT THE HIGHEST LEVEL FOR MORE THAN 50 YEARS.

Ever since, innovative, sustainable and practical solutions have been the key drivers in the development of the Sika® Ucrete® product range. If you are looking for the right flooring for your project, Sika® Ucrete® floors give you the reassurance of proven performance and a reputation acquired over decades of use in aggressive process environments throughout the food and beverage, pharmaceutical, chemical and engineering industries.

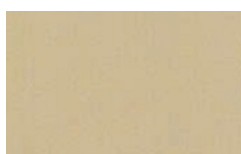


Sika® Ucrete® COLOR PORTFOLIO

Sika® Ucrete® MF



Green



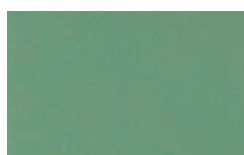
Cream



Grey



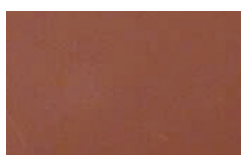
Light Grey



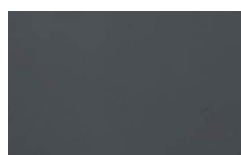
Light Green



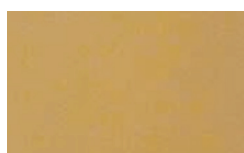
Blue N



Red



Slate Grey

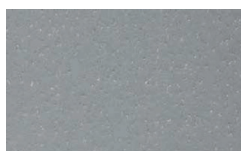


Yellow

Sika® Ucrete® UD 200



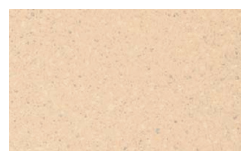
Green



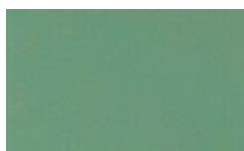
Grey



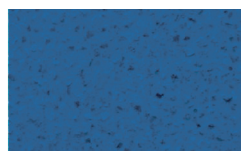
Light Grey



Cream



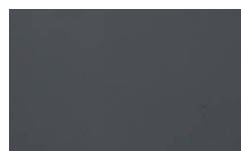
Light Green



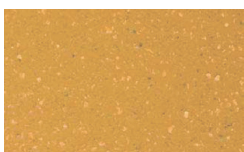
Blue



Red



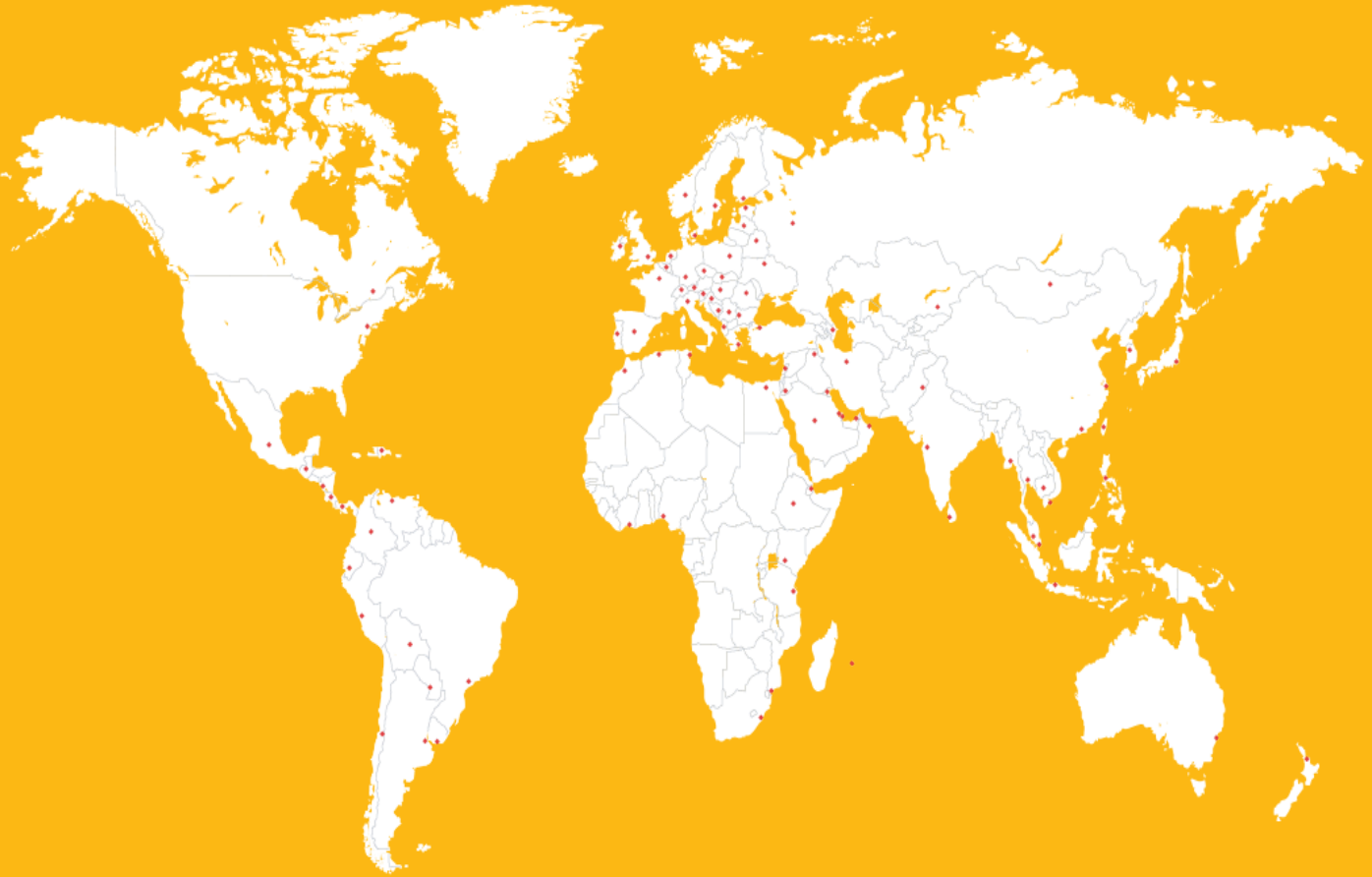
Slate Grey



Yellow

Sika® Ucrete® floor systems have been formulated to provide the very highest chemical and heat resistance. As a direct result, some yellowing of the installed floor will occur in areas of direct UV exposure. This is most apparent in lighter colors.

GLOBAL BUT LOCAL PARTNERSHIP



WHO WE ARE

Sika is a globally active specialty chemicals company. Sika supplies the building and construction industry as well as manufacturing industries (automotive, bus, truck, rail, solar and wind power plants, facade). Sika is a leader in processing materials used in sealing, bonding, damping, reinforcing and protecting load-bearing structures. Sika's product lines feature high quality concrete admixtures, specialty mortars, sealants and adhesive, damping and reinforcing materials, structural strengthening systems, industrial flooring as well as roofing and waterproofing systems.

**Because of the limitations of process color printing, the color samples contained herein are close approximations of actual colors and should not be relied upon for true color. Colors show approximate tone without any texture. Color matching should be made with an actual sample of the product, color and texture to be used. Gloss level will vary depending on product used, and make final approval from job site mock up .*



Our most current General Sales Conditions shall apply
Please consult the most current local Product Data Sheet prior to any uses

PT. Sika Indonesia

Jl. Raya Cibinong - Bekasi Km.20
Limununggal - Cileungsi
Bogor 16820 - Indonesia

Contact

Customer Service : 0800 - 140 - 1236
Phone : +62 21 8230025 | Fax : +62 21 8230026
idn.sika.com | sikacare@id.sika.com



BUILDING TRUST

