



# SIKALASTIC 590 DECKSEAL

Liquid Applied Membrane Roof Waterproofing

BUILDING TRUST





## Sikalastic® - 590 Deckseal

### Keunggulan:

- Exposed system, tidak perlu tutup screed atau keramik
- Tahan terhadap sinar UV
- Aplikasi mudah (sistem coating)
- Lebih mudah dalam perawatan (maintenance)
- Lebih tahan genangan air
- Memiliki sertifikasi green label

### Data Teknis:

- Sloping : min 1%
- Packaging: 4 kg & 20 kg
- Color: Grey & White
- Technical properties:
- Elongation (free film) : 360 % (ASTM D412)
- Tensile strength : 1.7 Mpa (ASTM D412)



**GREEN LABEL CERTIFIED**

**TEST REPORT**  
(This Report is issued subject to the terms & conditions set out below)

Our Ref : CB-62184/YS/P/2

Date : 19/09/2017

Subject : Green Label test under SGLS Category 032 on sample submitted PT Sika Indonesia on 31/08/2017 and test commenced on 04/09/2017.

Tested For : PT Sika Indonesia  
Jl. Raya Cibinong-Bekasi Km 20  
Limusnunggal, Cileungsi  
Bogor 16820, Indonesia  
Attn : Mr Muhammad Baktiar Arief

Sample Description : Sikalastic®-590

Results :

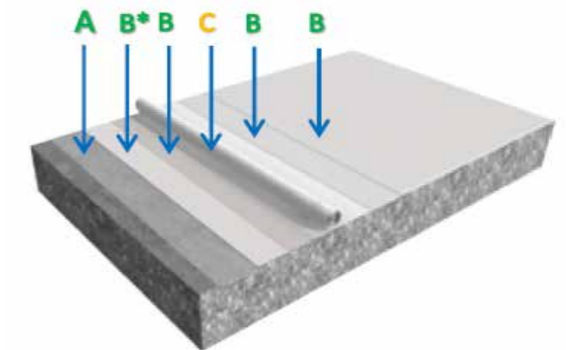
Item No.	Parameter	Test Method	Unit	Result	RPL	SGLS-032 Criteria	Justification
1	<b>Heavy Metals</b>						
	• Cadmium (Cd)	EPA 3052 : Microwave acid digestion	%	N.D.	0.01	N.D.	Pass
	• Lead (Pb)	EPA 6010B: ICP	%	N.D.	0.01	N.D.	Pass
	• Total Chromium (Cr)		%	N.D.	0.01	N.D.	Pass
	• Mercury (Hg)		%	N.D.	0.01	N.D.	Pass
2	Volatile Organic Compounds		g/L	37.0E	1.0	50*	Pass
3	Total Halogenated Organic Solvent		%	N.D.	0.1	N.D.	Pass
4	Total Aromatic Organic Solvent	ISO 11890-2	%	N.D.	0.1	N.D.	Pass
5	Epichlorohydrin		%	N.D.	0.1	N.D.	Pass
6	N-Methyl Pyrrolidone		%	N.D.	0.1	N.D.	Pass
7	Formaldehyde	High Performance Liquid Chromatography	%	N.D.	0.3	N.D.	Pass
8	Alkyl Phenol Ethoxylate	LCMS-MS	%	N.D.	0.1	N.D.	Pass
9	Flash Point	ASTM D3828-12a (Prec D)	°C	>61.0	-	>61.0	Pass

Notes : \*N.D. - Not Detected (V) Reporting Limit  
RPL - Reporting Limit  
Tests for Formaldehyde & Alkyl Phenol Ethoxylate were performed in conjunction with Bureau Veritas Singapore Pte Ltd and Flash Point in conjunction with Inspectorate (S) Pte Ltd.  
\*Exotherm, Max

VI SHOW PEI  
ASSISTANT MANAGER  
BIOLOGICAL & CHEMICAL TECHNOLOGY DIVISION

## SISTEM

- LAM Reinforced System (New Construction & Refurbishment)
- Used for UV stable waterproofing and reflective coating to enhance energy efficiency, with smooth surface performance



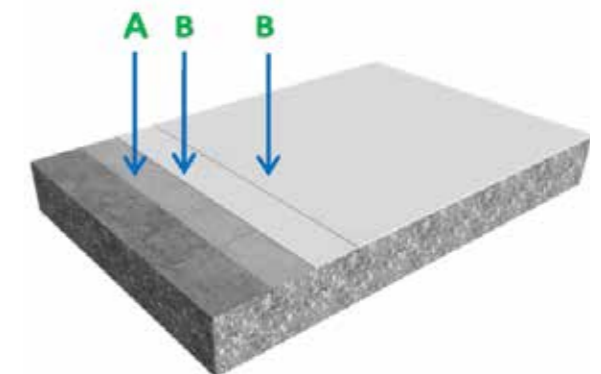
Note Drawing :

- A : Primer coat (Sikalastic®-590 diluted with 10% water)
- B : Sikalastic®-590 layer
- C : Reinforced layer (Sika®-120 Reemat)

Total Thickness : ~ 0.7 - 0.9 mm  
Total consumption : 1.6 - 1.9 kg/m<sup>2</sup>

\* : May not be applied when substrate is good and primer has covered substrate

- Recoating & Repair LAM System (Refurbishment)
- On existing construction with applied Sikalastic®-590



Note Drawing :

- A : Primer coat (Sikalastic®-590 diluted with 10% water)
- B : Sikalastic®-590 layer
- C : Reinforced layer (Sika®-120 Reemat)

Total Thickness : ~ 0.6 mm  
Total consumption : ~ 1.3 kg/m<sup>2</sup>

# Sika® Reemat Premium 120

Detail yang mudah dengan Sika® Reemat Premium 120:

- No form parts and scissor required, fibre matt can be tear on side in the desired shape
- Makes detailing much quicker than standard reinforcement
- Finished Roof is completely seamless
- Easier to control material consumption & thickness
- Use for locally crack repair
- Density: 120 gr/m<sup>2</sup>
- Dimension: 1.38 x 200 m



Dimana bisa di aplikasikan?



**PROJECT**  
PCI Perfect Industrial, Cikupa, Banten  
(3,500 m<sup>2</sup>)

**REQUIREMENTS**  
Protect all process plant from leakage

**SIKA SOLUTION**  
Sikalastic-590  
Sika-120 Reemat

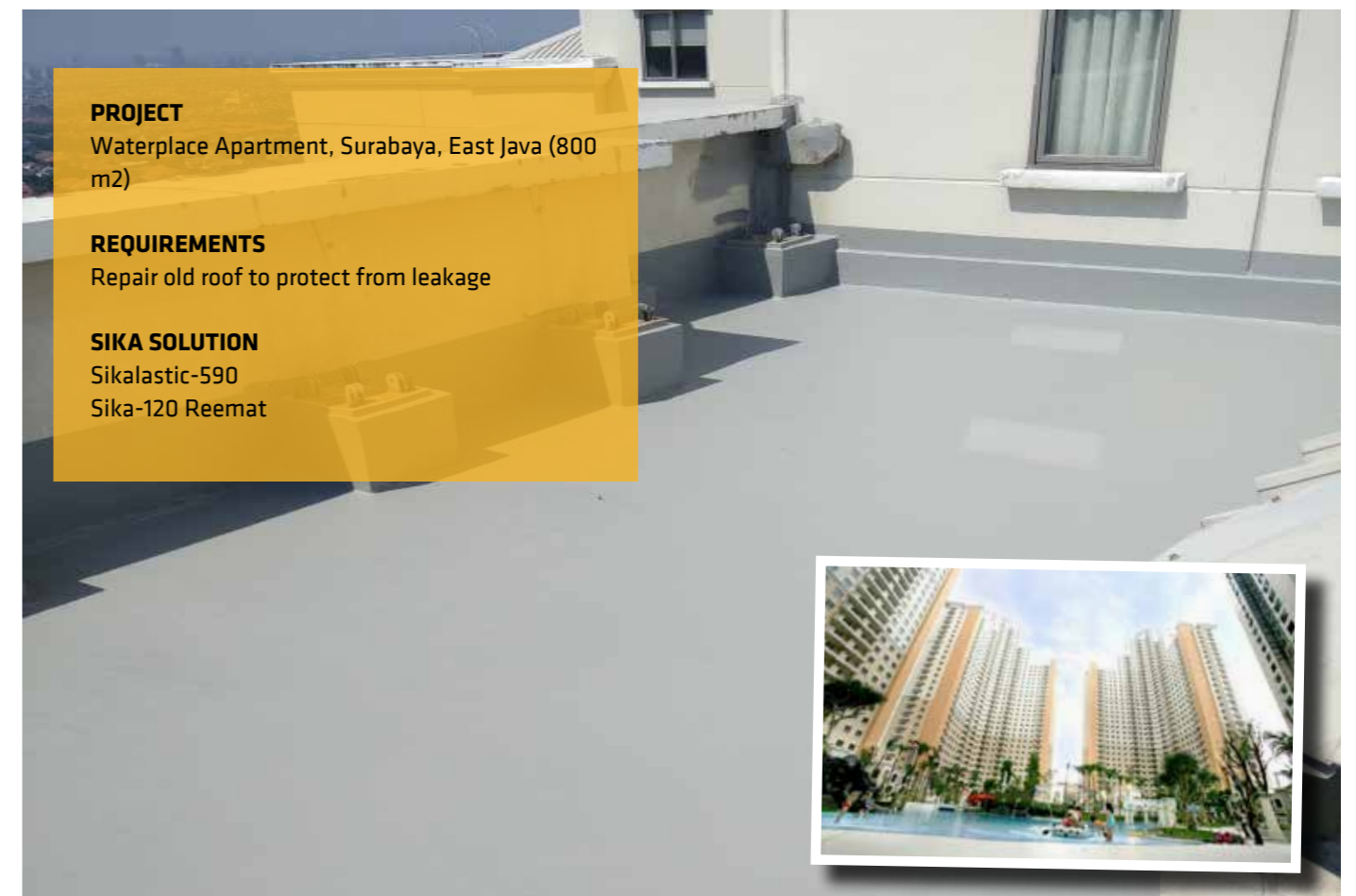
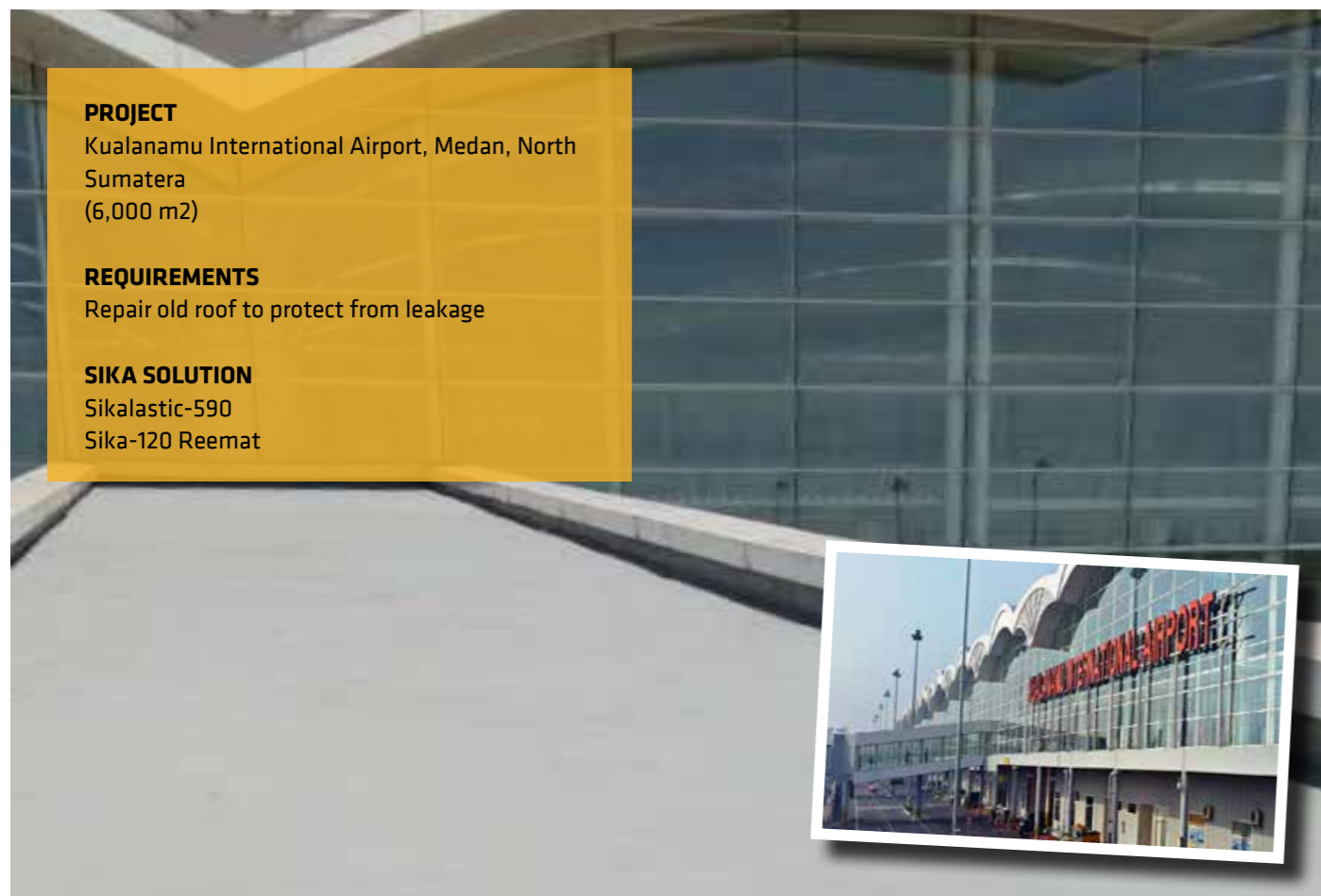


**PROJECT**  
Residential @ Kota Baru Parahyangan,  
Padalarang, West Java  
(6,000 m<sup>2</sup>)

**REQUIREMENTS**  
Protect from leakage and aesthetics issues when  
using screed (crack)

**SIKA SOLUTION**  
Sikalastic-590  
Sika-120 Reemat

## REFRENSI PROJEK



# SOLUSI LENGKAP UNTUK RUMAH (SIKA)



## 1 Waterproofing Atap

- Exposed
- Non Exposed
- Roof Garden/Planter Box

## 2 Solusi Dinding

- Waterproofing Dinding
- Coating Batu Alam
- Coating Anti Lembab
- Perakat Bata Merah / Ringan
- Plesteran & Acian

## 3 Solusi Lantai

- Perakat Keramik
- Perakat Lantai Parquet
- Lantai Exposed
- Levelling

## 4 Waterproofing Area Basah

- Toilet
- Kolam Renang
- Tangki (GWT/STP)

## 5 Solusi Perbaikan

- Keropos
- Retak
- Genteng Pecah
- Kebocoran

## 6 Sealant

- Pengisi Celah/Joint untuk Berbagai Macam Material
- Perakat Serba Guna

## 7 Waterproofing Basement

- Waterproofing Lantai & Dinding Basement

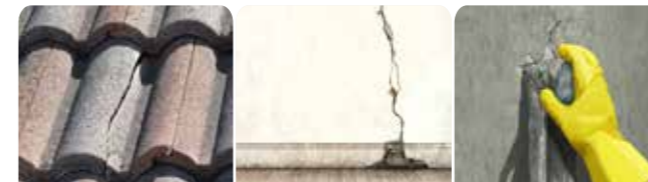
## PRODUK HIGHLIGHT

### Waterproofing Atap:



- **Exposed**  
Sikalastic® - 590
- **Non Exposed**  
Sikalastic® - 311 AE / Sikatop® - 109 Elasto
- **Roof Garden/Planter Box**  
Sarnafil® / Sika® Davco K10 GRS 2000

### Solusi Perbaikan:



- **Keropos**  
Sikatop® & Monotop® Series / SikaGrout® Series
- **Retak**  
Sikadur® Series / SikaGrout® Series
- **Genteng Pecah**  
Sika® Multi Seal
- **Kebocoran**  
Sikacim® Accelerator / Sika® Injection Series

### Sealant:



- **Pengisi Celah/Joint untuk Berbagai Macam Material**  
Sikahyflex® Series, Sikaflex® Series, Sikasil® Series
- **Perakat Serba Guna**  
Sika® MaxTack

### Waterproofing Basement:



- **Waterproofing Lantai & Dinding Basement**  
Sika® Viscocrete 3115 N, Sikabit® W-15

### Waterproofing Area Basah:



- **Toilet**  
Sikatop® 107 Seal / Plus
- **Kolam Renang**  
Sikatop® 109 Elasto
- **Tangki (GWT/STP)**  
Sikatop® 109 Elasto / Sikagard® Series

### Solusi Lantai:



- **Perakat Keramik**  
SikaCeram® Series
- **Perakat Lantai Parquet**  
Sikabond® T 55
- **Lantai Exposed**  
Sika® Chapdur & Sikafloor® Series
- **Levelling**  
Sikafloor® Level 55

### Solusi Dinding:



- **Waterproofing Dinding**  
SikaCoat® Series
- **Perakat Bata Merah / Ringan**  
SikaMur® Series
- **Plesteran & Acian**  
SikaWall® Series

## **Head office :**

**PT. Sika Indonesia**

Jl. Raya Cibinong - Bekasi Km.20

Limusnunggal - Cileungsi

Bogor 16820 - Indonesia

## **Contact**

Customer Service : 0800 - 140 -1236

Phone. +6221 8230025 | Fax. +6221 8230026

idn.sika.com | sikacare@id.sika.com